



MODEL SC Automatic Sampler

Automatic Cross-Cut Sampler for Free-Flowing Materials



MODEL SC AUTOMATIC SAMPLER

Features

- Adjustable sample opening
- All electric operation with 1/8 hp, 120 VAC gear motor
- Compact size
- Working temperatures up to 250°F (121°C)
- Standard controller (Nema 4X) with choice of timer (other options available).
- May be used as a continuously operated primary sampler.

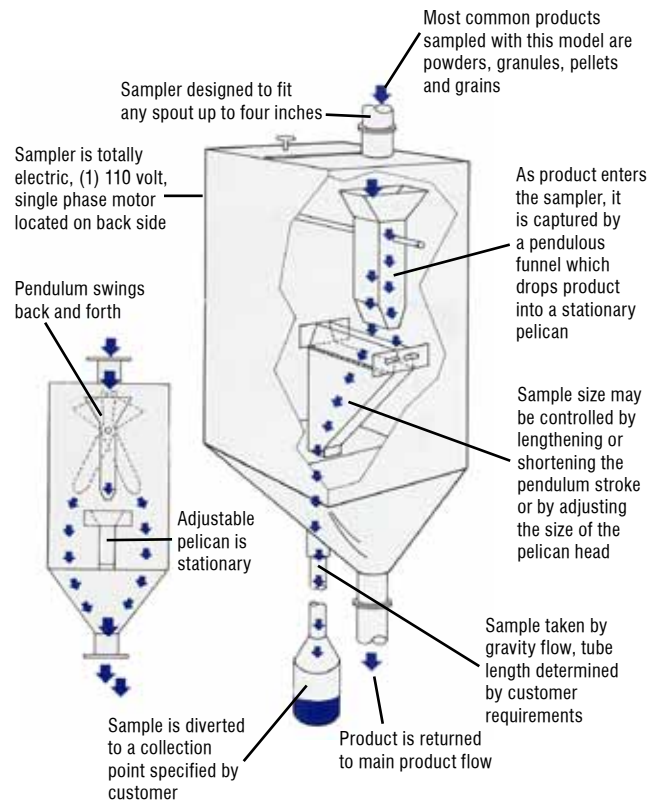
Options

- Controller connected to primary sampler
- Mounting flanges for size and shapes
- Special construction materials available
- Explosion-proof motor
- Secondary pelican for two samples
- Hardening treatments to protect against wear and abrasion

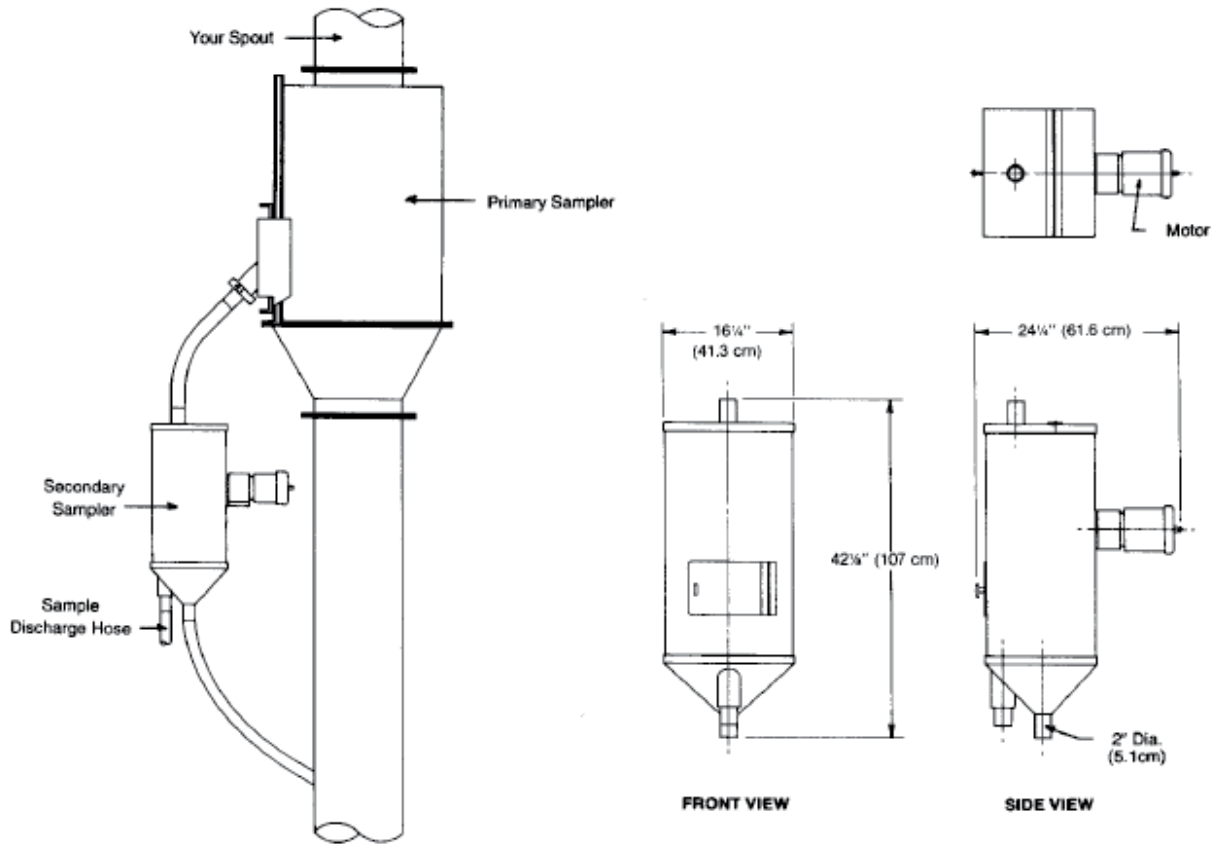
Description

The Model SC is a cross-cut sampler designed to reduce the size of a sample obtained by the primary sampler.

The Model SC sampler replaces a portion of the gravity line carrying the sample from the primary sampler. The product enters through a pendulum which swings back and forth over an adjustable stationary pelican. The product falls into the opening of the pelican and is diverted to a collection point.



MODEL SC TECHNICAL DATA



SPECIFICATIONS

Basic Electrical Requirements	115/230 VAC, single phase, 50/60 Hz; control box fused to 2 amps
Quantity of Sample	determined by flow rate, aperture size and time in line
Product Size	10 micron to 1/4" (6 mm); larger sizes upon request
Recommended Location of Sampler	near primary sampler or in product flow
Suggested Connection to Collection Point	rigid metal or flexible tubing to a container or indexing cabinet
Materials of Construction	stainless steel housing and inspection door
Temperature Range	up to 250° F (121° C)

⚠WARNING

It is solely the responsibility of the end-user, through its own analysis and testing, to select products and materials suitable for their specific application requirements, ensure they are properly installed, safely applied, properly maintained, and limit their use to their intended purpose. Improper selection, installation, or use may result in personal injury or property damage.



SENTRY EQUIPMENT CORP

966 Blue Ribbon Circle North
 Oconomowoc, WI 53066 USA
 Tel: 262-567-7256 • Fax: 262-567-4523

E-mail:
 sales@sentry-equip.com

Website:
 www.sentry-equip.com



For further information, contact: