



# MODEL R Automatic Sampler

**For Free-flowing and  
Non Free-flowing  
Liquids and Slurries**



**MODEL R AUTOMATIC SAMPLER**

## Features

- Close tolerance (0.003" / 0.0008 cm) between the sample tube and auger allows product clean out
- Tube retracts from the line to avoid any restriction in the product flow
- Product contact materials are 316 stainless steel and Teflon® seals

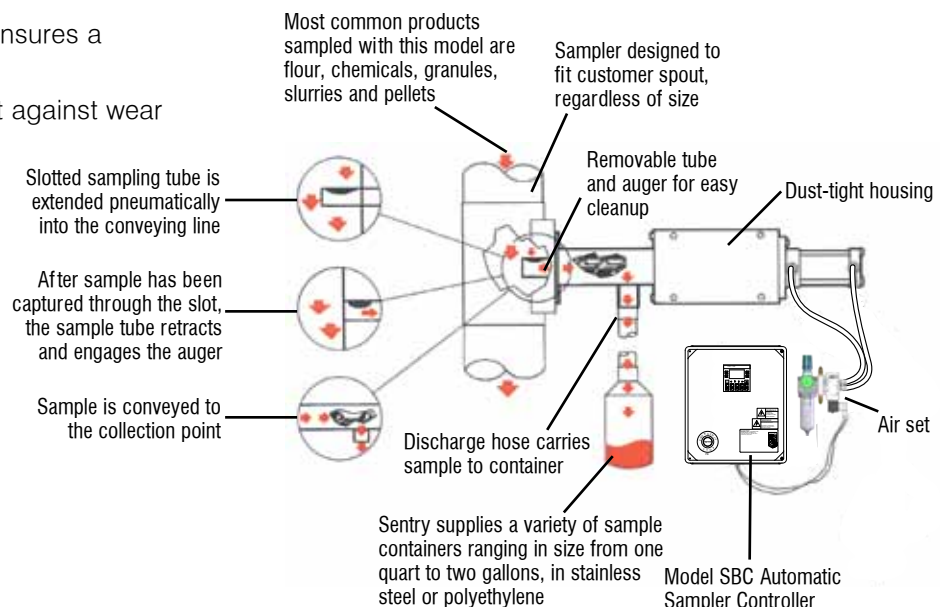
## Options

- Custom mounting adapters for round, square or other shaped chutes or pipes
- Custom seals
- Available in stroke lengths from 4-8" (10-20.3 cm)
- Custom construction materials
- Nickel-impregnated Teflon® ensures a non-stick surface
- Hardening treatments protect against wear and abrasion

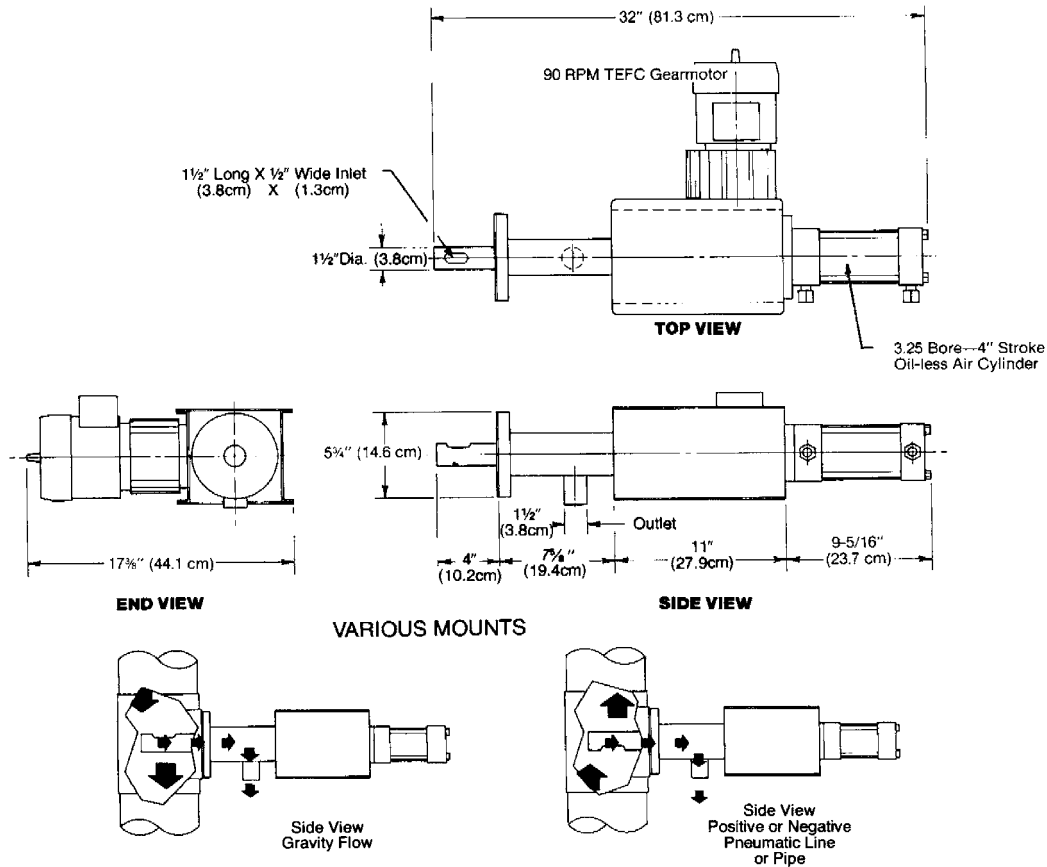
## Description

The Model R is designed for automatic spot sampling of free-flowing and non free-flowing materials (granules, powders and flakes), high viscosity liquids or slurries from gravity lines and positive or negative pressure systems.

The Model R samples when a solenoid-controlled air cylinder extends a slotted sampling tube into the conveying line. After the sample has been captured through the slot, the sample tube retracts and engages the auger. The sample is then conveyed to the collection point.



## MODEL R TECHNICAL DATA



## SPECIFICATIONS

Basic Electrical Requirements	115 VAC, single phase, 60 Hz; control box fused to 2 amps
Air Requirements	80 psig, 1.5 ft <sup>3</sup> /cycle (5.5 barg, 42.5 l/cycle)
Quantity of Sample	32 cc
Product Size	10 μm to 1/4" (6 mm); larger sizes upon request
Recommended Location of Sampler	vertical gravity lines
Suggested Connection to Collection Point	rigid metal or flexible tubing to a container or indexing cabinet
Materials of Construction	aluminum housing and stainless steel sample tube
Temperature Range	up to 250°F (121°C)

**NOTE:** Teflon is a registered trademark of E. I. Du Pont de Nemours and Company.

### WARNING

It is solely the responsibility of the end-user, through its own analysis and testing, to select products and materials suitable for their specific application requirements, ensure they are properly installed, safely applied, properly maintained, and limit their use to their intended purpose. Improper selection, installation, or use may result in personal injury or property damage.



### SENTRY EQUIPMENT CORP

966 Blue Ribbon Circle North  
Oconomowoc, WI 53066 USA  
Tel: 262-567-7256 • Fax: 262-567-4523

E-mail:  
sales@sentry-equip.com

Website:  
www.sentry-equip.com



For further information, contact: