



Griffco Valve Inc.
 6010 N. Bailey Ave., Ste 1B
 Amherst, NY 14226 USA
 Phone: +1 716 835-0891
 Fax: +1 716 835-0893
sales@griffcovalve.com
www.griffcovalve.com

M-SERIES BACK PRESSURE VALVES



Features:

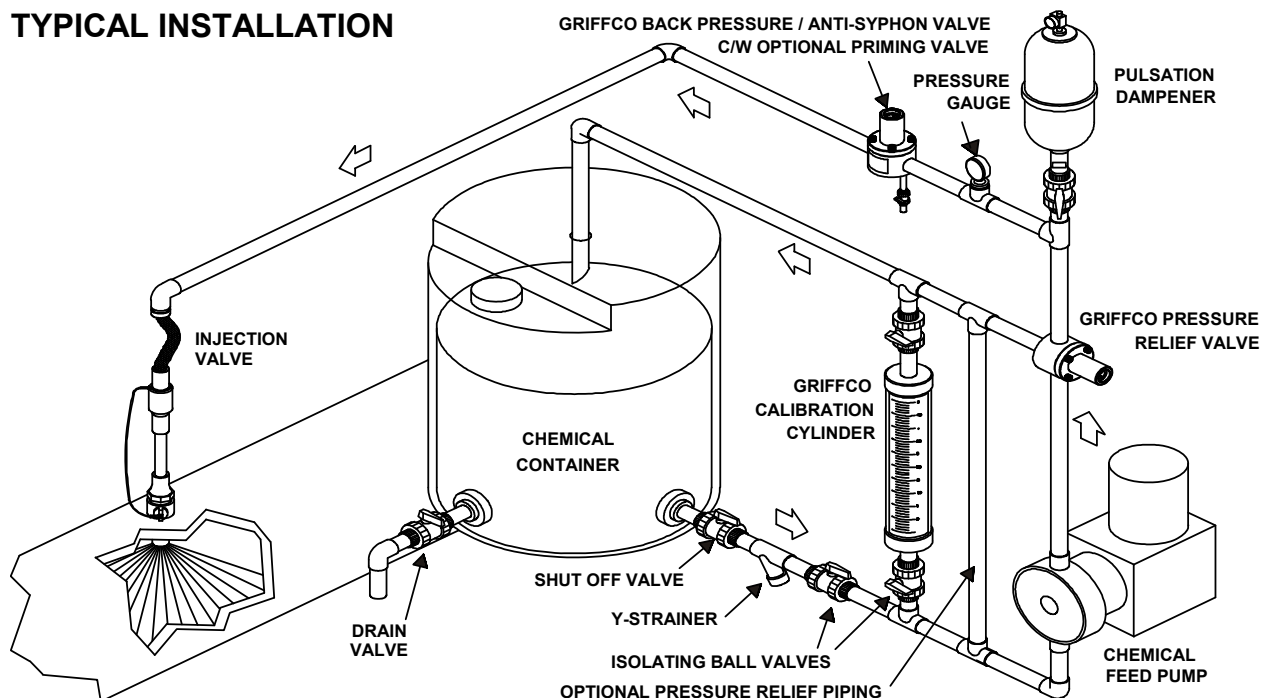
- Molded Noryl Top
- High Reliability / Low Cost
- Compact Size for OEM Applications
- Adjustable Pressure Settings
- Optional 25 Bar (350 psi) Metal Valve
- Anti-Siphon Function
- Robust, Machined Body Construction
- Vulcanised PTFE/EPDM Diaphragm
- Wide Range of Materials
- ISO 9001 Certified

Operation:

Griffco diaphragm back pressure valves apply positive discharge pressure to a metering pump system to prevent siphoning and eliminate varying dosage rates caused by fluctuating downstream pressure. The diaphragm is held against the valve seat by an internal spring. When the preset pressure is exceeded, the diaphragm is forced up and chemical flows through the valve to the injection point. The valves are preset for 3.5 bar (50 psi), however they are field adjustable from 1 – 10 bar (10-150 psi) via the adjustment screw. Installation should be as close to the injection point as possible to prevent chemical line drainage, and it is most important that all chemical system equipment such as pulsation dampeners and pressure gauges are between the pump and back pressure valve.

Griffco's molded Noryl top extends the temperature and pressure rating of the standard valves. New valve designs continue to enhance the performance of chemical feed systems by applying a continuous back pressure to the chemical feed pump, while also acting as an anti-siphon valve. New construction ensures increased reliability in the rigorous service of municipal and industrial applications. Wetted materials include: **PVC, CPVC, PP, PVDF, PTFE, 316 SS, A 20 and Hast. C.** Available sizes: DN8, DN10 & DN15; 1/4", 3/8", & 1/2".

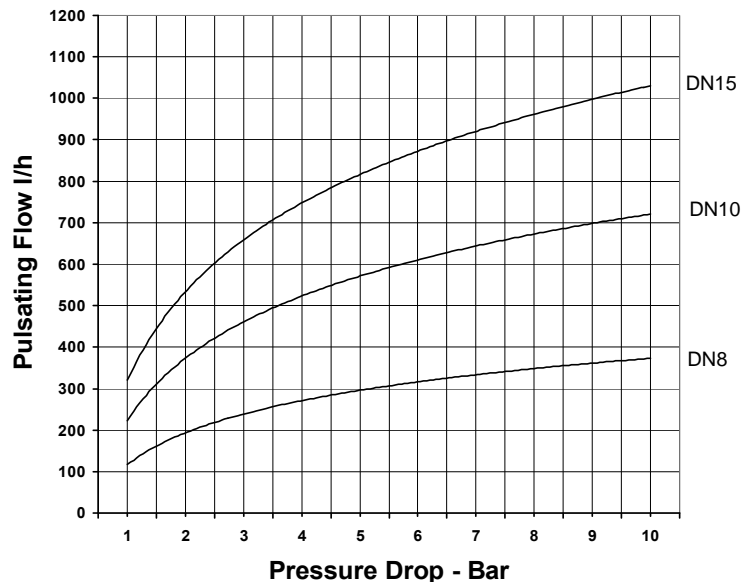
TYPICAL INSTALLATION



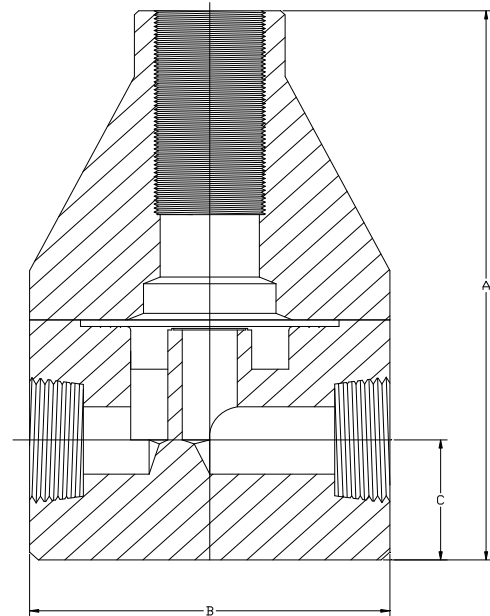
Technical Data:

Sizes: BPM		DN8, DN10, DN15 and 1/4", 3/8", 1/2"				
Connections:		ISO Thread, Socket and Union				
Pressure Adjustment		Standard: 1 – 10 bar, Optional: 0 – 3.5 bar, 1 – 17 bar, 3.5 – 25 bar Standard: 10 – 150 psi, Optional: 0 – 50 psi, 10 – 250 psi, 50 – 350 psi				
Flow Rates @ 10 bar (150 psi)		Shipping Weight: kgs (lbs)				
Size	Pulsating lph (gph)	Continuous lph (gpm)	Plastic	Metal / Plastic Top	Metal / Metal Top	
1/4" DN8	375 (100)	1135 (5)	0.45 (1)	1.14 (2.5)	1.36 (3.0)	
3/8" DN10	757 (200)	2271 (10)	0.45 (1)	1.14 (2.5)	1.36 (3.0)	
1/2" DN15	1135 (300)	3400 (15)	0.45 (1)	1.36 (3.0)	1.59 (3.5)	
Max Temperature: °C (°F)			PVC: 60° (140°); CPVC & PP: 90° (195°); PTFE & PVDF & Metal: 150° (300°), Peak 200° (390°)			
Max Operating Pressure @ 21°C (70°F):			Plastic/Noryl: 25 bar (375 psi), Metal /Metal: 138 bar (2000 psi)			
Materials of Construction:						
Diaphragm			PTFE / EPDM, Optional: Viton, Hypalon, Nitrile, PTFE / Viton			
Valve Top			Standard: Noryl Optional: 316 SS L			
Valve Body			PVC, CPVC, PP, PTFE, PVDF, 316 SS L, A 20, Hast. C, Others on Request			

Performance Curves:



Dimensions:



Product Codes For Ordering:

BPM
 1 2 3 4

1 = Size

2 = Material

3 = Spring Opt
Bar (psi)

4 = Options

025 – 1/4", DN8
038 – 3/8", DN10
050 – 1/2", DN15

P - PVC
CP - CPVC
PP - Polypro
T - PTFE
K - PVDF
H - Halar
S - 316 SS
A - Alloy 20
C - Hastelloy C

Blank - 1-10 (10-150)
1 - 0 – 3.5 (0-50)
2 - 1 – 17 (10-250)

For 3.5 - 25 (50-350)
spring use option
code "MSS"

Blank – NPT & PTFE/EPDM
V - Viton Diaphragm
TV – PTFE/Viton Diaph.
B - BSP Connections
S - Socket Connection
SD - Metric Socket
F - Flange Connection
FD – Metric Flange
U - Union Connection
UD – Metric Union
OSS - 316 SS Top
MSS - 3-25 (50-350) 316SSL Top
AR - Priming Valve
90 - 90° Configuration

DIMENSIONS: BPM - Series

All Materials Orifice size = 0.793cm (0.312 in)

Size	A – cm (in.)	B – cm (in.)	C – cm (in.)
1/4", DN8	9.02 (3.550)	5.97 (2.350)	1.90 (0.750)
3/8", DN10	9.02 (3.550)	5.97 (2.350)	1.90 (0.750)
1/2", DN15	10.8 (4.250)	5.97 (2.350)	2.74 (1.080)

Note: Option MSS is only for use on 316SS, A20, & Hast C Valves.