



Griffco Valve Inc.

6010 N.Bailey Ave, Ste 1B
 Amherst, NY 14226 USA
 Phone: 1 800-474-3326
 Fax: 1 716-835-0893
sales@griffcovalve.com
www.griffcovalve.com

PVC CALIBRATION COLUMNS

Features:

- High Reliability / Low Cost
- High Contrast Graduation Markings
- Clear Easy-View Tube
- Robust Schedule 40 Pipe Construction
- Direct mL and GPH Readout
- Sealed Top with Overflow Connection
- Optional EZ-Clean Model
- Optional Open Top with Dust Cap
- No Metal Hardware
- Corrosion Resistant



Operation:

Griffco calibration cylinders are installed in the suction line to the chemical metering pump. Two isolating valves, (not supplied) must be installed in the suction line as per the drawing below. The top of the cylinder should be vented back to the storage tank or to drain. Fill the cylinder to the top mark then close the valve from the chemical tank. Switch on the chemical feed pump and draw down the chemical in the cylinder for 30 seconds. Switch the pump off. The reading on the right side of the cylinder is a direct readout of USgph. Alternatively, observe the volume withdrawn on the mL scale. To convert to LPH or GPH use this formula:

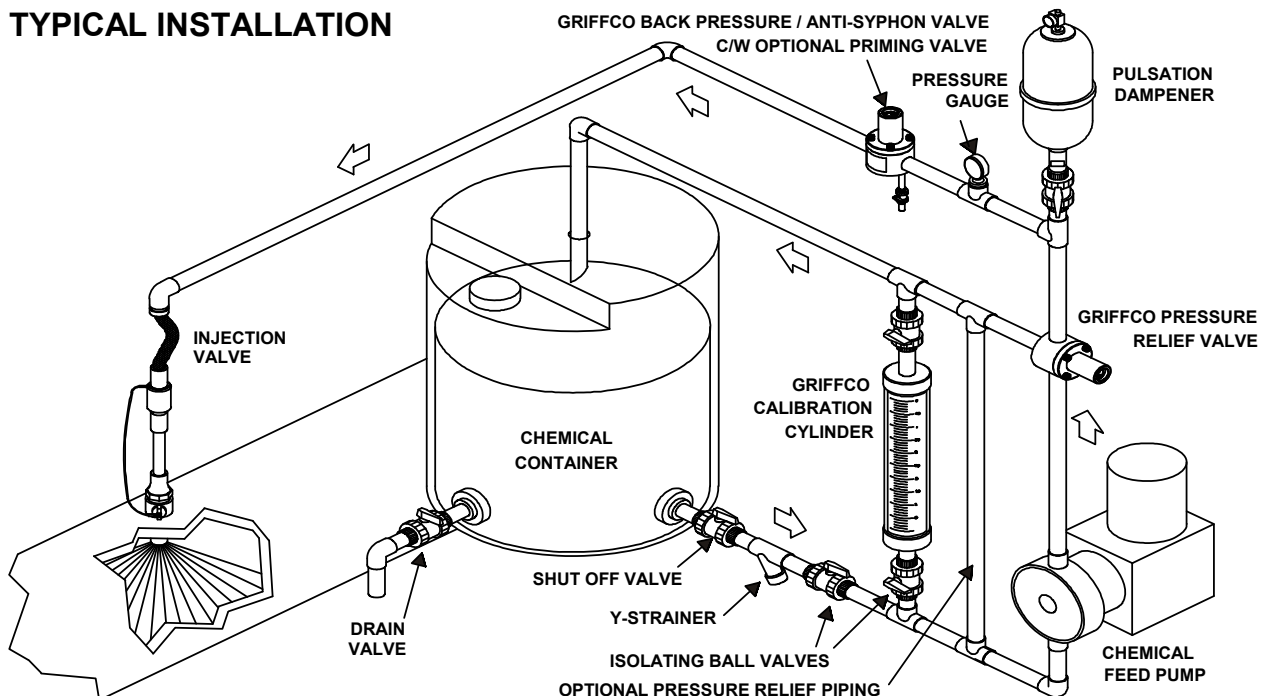
$$\text{LPH} = 3.6 \times [\text{mL}] \div \text{Time (sec)}$$

$$\text{GPH} = 0.951 \times [\text{mL}] \div \text{Time (sec)}$$

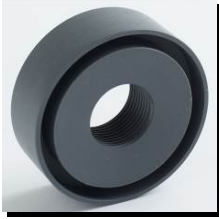
Note: Max. cylinder pressure is 1 bar (15 psi).

Griffco calibration cylinders are designed to enhance the performance of chemical feed systems by providing a verification of the flow rate of the chemical feed pump. Robust construction of clear PVC with an easy to read graduation in mL and gph. Available in three models: EZ-Clean, Vented, and Open Top; and in 15 sizes: 100 mL through 40,000 mL as detailed here.

TYPICAL INSTALLATION



Description of models:



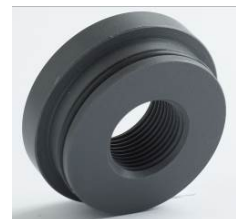
Sealed:

Top is glued to cylinder and contains a vent or overflow connection. (same as bottom connection). Used in applications where there is a positive suction head and a permanent installation is desired.



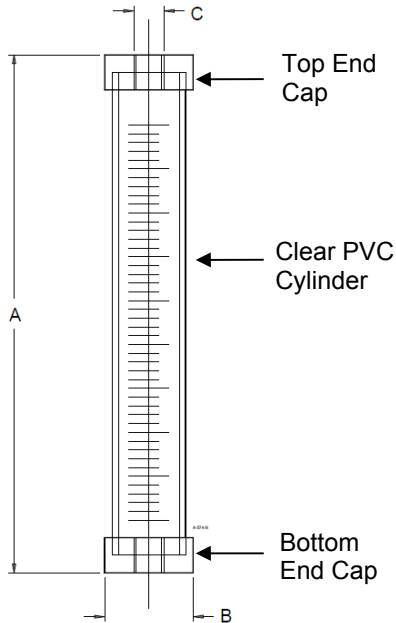
EZ-Clean: (Avail. 100 – 7000 mL only)

Top is sealed with an O-ring and has a vent connection, but removable for easy cleaning. Used in applications where frequent cleaning is required such as polymer, alum, ferric chloride or chlorine.



Loose Cap: (Avail. up to 20,000 mL)

Top is loose and does not have a connection in the top. Dust cover only. Used in applications where there is no positive suction head and the cylinder must be filled from the top.



Capacity (mL) \diamond	Max Flow \blacktriangle (USgph)	(lph)	Scale (mL)	Scale \blacktriangle (gph)	A cm (in)	B cm (in)	C – Size Connection
100	3.17	12	1	.1	27.9 (11)	3.8 (1.5)	1/2" DN15
200	6.34	24	1	.1	48.3 (19)	3.8 (1.5)	1/2" DN15
300	9.51	36	5	.2	33.0 (13)	5.6 (2.2)	1/2" DN15
500	15.85	60	5	.2	33.0 (13)	6.4 (2.5)	3/4" DN20
1,000	31.70	120	5	.2	55.9 (22)	6.4 (2.5)	3/4" DN20
2,000	63.40	240	10	1	50.8 (20)	9.4 (3.7)	1" DN25
3,000	95.10	360	10	1	43.2 (17)	12.5 (4.9)	1.5" DN40
4,000	126.8	480	10	1	94.0 (37)	9.4 (3.7)	1" DN25
5,000	158.5	600	10	1	71.1 (28)	12.5 (4.9)	1.5" DN40
7,000	221.9	840	10	1	96.5 (38)	12.5 (4.9)	1.5" DN40
10,000	317.0	1200	100	5	63.5 (25)	17.7 (6.95)	2" DN50
15,000	475.5	1800	100	5	94.0 (36)	17.7 (6.95)	2" DN50
20,000	634.0	2400	100	5	119.4 (47)	17.7 (6.95)	2" DN50
30,000	952.0	3600	200	10	165.1 (65)*	24.1 (9.5)*	4" DN100
40,000	1,268.0	4800	200	10	196.9 (77.5)*	24.1 (9.5)*	4" DN100

\blacktriangle Max Flow and gph scale are based on 30 second drawdown
 \diamond For 60 sec draw down, double capacity in mL or flow size

* Reference only

Codes for Ordering PVC Calibration Columns:

CC

1 2 3 4

1 = Size

0100 – 100 mL
 0200 – 200 mL
 0300 – 300 mL
 0500 – 500 mL
 1000 – 1000 mL
 2000 – 2000 mL
 3000 – 3000 mL
 4000 – 4000 mL
 5000 – 5000 mL
 7000 – 7000 mL
 10000 – 10000 mL
 15000 – 15000 mL
 20000 – 20000 mL
 30000 – 30000 mL
 40000 – 40000 mL

2 = Top End Cap Style (Top Cap Only)

S – Sealed
 L – Loose (up to 20000mL)
 EZ – EZ Clean (up to 7000mL)

3 = Connections

Blank – NPT Threads
 B – BSPT Threads
 S – Socket
 SD – Metric Socket
 F – Flanged
 FD – Metric Flanged
 U – Union
 UD – Metric Union

4 = Oring Material

(Union & EZ end cap orings)

Blank – FKM (Viton®)
 E – EPDM

Available O-ring Options:

PTFE Encapsulated
 or FFKM are available
 upon request